

# VALMET AUTOMOTIVE

The Kirchardt battery plant – our next growth milestone

Olaf Bongwald at Grand Opening of the Kirchardt Battery Plant, Press conference and event  
June 30, 2023



VALMET AUTOMOTIVE

# VALMET AUTOMOTIVE – OUR HISTORIC LANDMARKS

Competence in building electric vehicles since 2009



1968 1969 1992 1995 1997 2004 2005 2009 2010 2011 2013 2017 2018 2019 2021 2022 2023

**1968** Founded as Saab-Valmet Joint Venture

**1969** To become independent from Saab

**1992** Renamed to Valmet Automotive

**1995**

**1997**

**2004**

**2005**

**2009** Acquisition of Karmann Convertible Roof Systems

**2010**

**2011**

**2013** CATL as a new shareholder

**2017** New SALO plant SOP of high-volume battery systems

**2018**

**2019** Uusikaupunki plant becomes EV battery plant, too

**2021**

**2022** New Kirchartt plant as 3rd EV battery plant

**2023**



# THE FAST LANE TO FUTURE VEHICLES – VA GROUP

MORE THAN 50 YEARS OF INNOVATION. AND NEWER THAN EVER



2.8

BEUR Gross Sales  
(2022)



4.100

Employees  
(YE 2022)



3

Countries



3

Shareholders  
(Pontos, Tesi, CATL)

ELECTRIFYING

ACTUATING

MANUFACTURING



1968

2009



Mercedes-Benz



PORSCHE

AMG



VOLVO



BMW



MINI



BENTLEY



THINK



NISSAN



GARIA



CHRYSLER



SAAB



# VALMET AUTOMOTIVE GROUP – OUR LOCATIONS



Vehicle Manufacturing  
EV Systems | **Uusikaupunki**

**Salo** | EV Systems

EV Systems | **Turku**

**Vantaa** | Group functions



Roof & Kinematic Systems | **Osnabrück**

Group functions | **Frankfurt a.M.**

EV Systems | **Kirchardt**

EV Systems | **Bad Friedrichshall**

EV Systems | **Weihenbronn**

**Munich** | EV Systems

Group functions

**Żary** | Roof & Kinematic Systems



 = Manufacturing

 = Engineering

 = Group functions



# THE BATTERY AS KEY FOR THE TRANSITION – OUR JOURNEY

New **Battery test centers established** in 2020 in Bad Friedrichshall, GER and Weihenbronn, GER



**High voltage-high volume battery production** operational in

- Salo, FIN (H1/2021)
- Uusikaupunki, FIN (H2/2021)

**Opening of 3<sup>rd</sup> plant in Kirchartd**

- 4<sup>th</sup> plant under consideration



**Early EV activities** (Think City, Fisker, own EVA concepts)



2010

**Off-highway batteries (48V)** developed in Uusikaupunki, FIN



2018

**High-volume 48V car battery** production in Salo, FIN



2019

**Established system supplier business** (complete value chain coverage)



2021

2022

Ca. 1.8 million battery systems since end of 2019

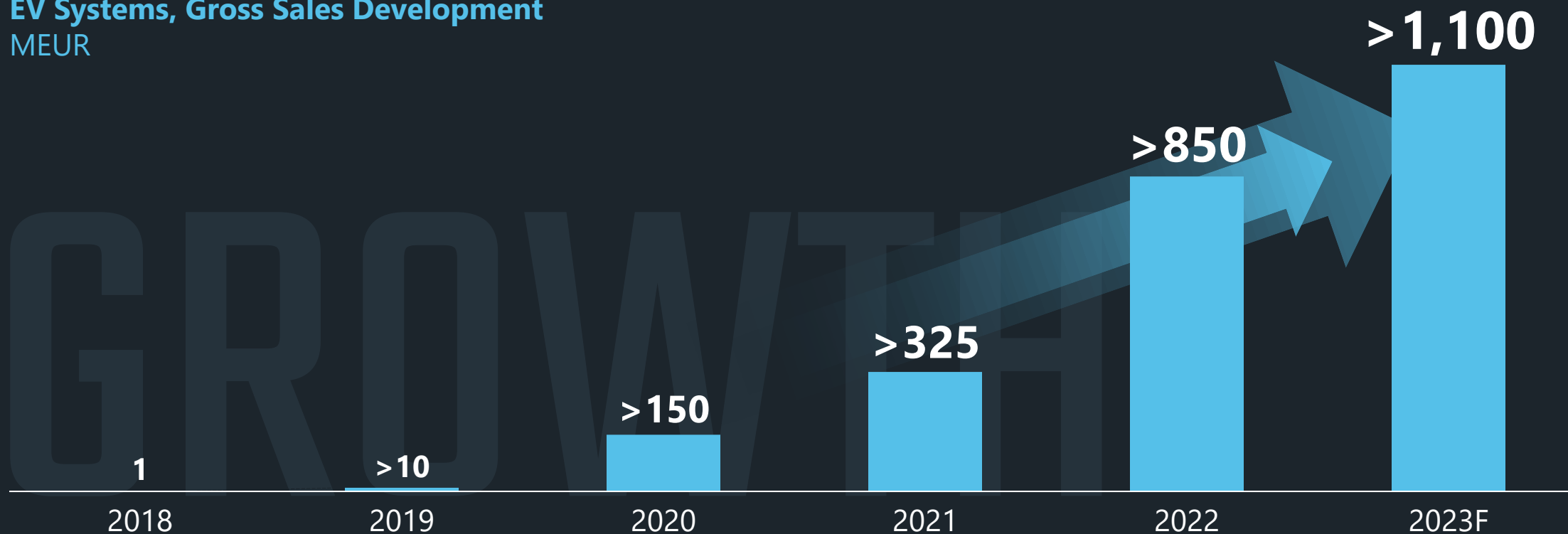
> 1 BEUR Gross Sales (EVS)

2023

VA started activities with full-electric vehicles already in 2010 – this was the ignition point for today's business, high volume production of high-voltage batteries at three locations with a complete value chain coverage

# EV SYSTEMS – OUR GROWTH ACCOMPLISHMENT

EV Systems, Gross Sales Development  
MEUR



Valmet Automotive is delivering on its ambition to strongly grow EV Systems revenue on a yearly basis – employee number has grown from a dozen people at the start to >1,200 employees today



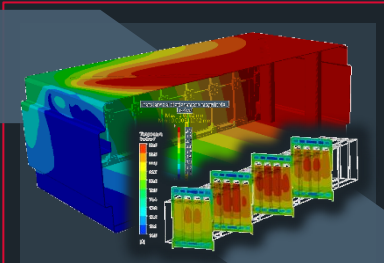
# EV SYSTEMS – COMPLETE VALUE CHAIN COVERAGE

CONCEPT > DEVELOPMENT > PROTOTYPING > TESTING > PRODUCTION

48V & High-Voltage



**PROJECT & PROCESS MANAGEMENT**



Full V-Cycle



Automotive, Truck & Bus, Off-Highway

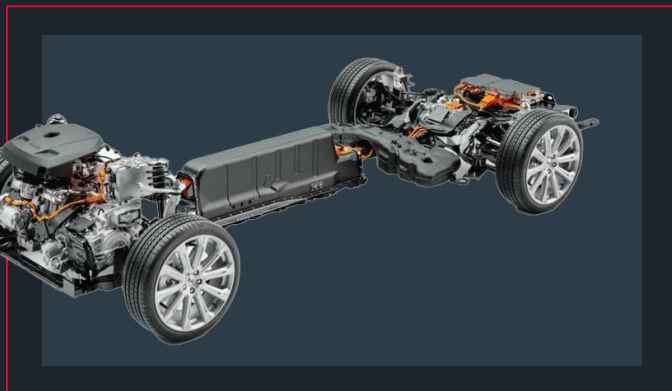


System Supplier



# EV SYSTEMS – BROAD SCOPE OF PRODUCTS AND APPLICATIONS

## AUTOMOTIVE



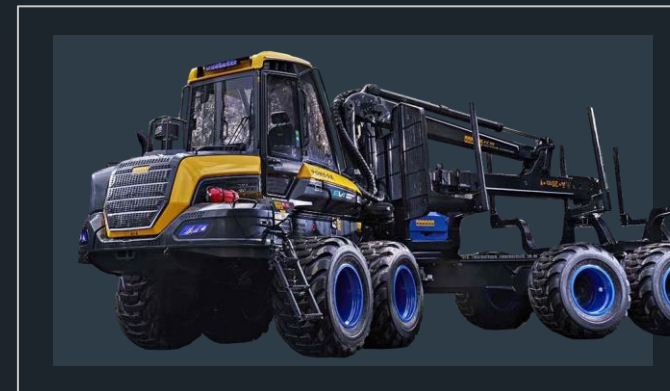
- Cell modules / blocks
- Battery pack / system

## TRUCK & BUS



- Components – Junction box, CMC & BMU
- Platform module (Valmet Automotive intellectual property)
- Battery pack / system

## OFF-HIGHWAY



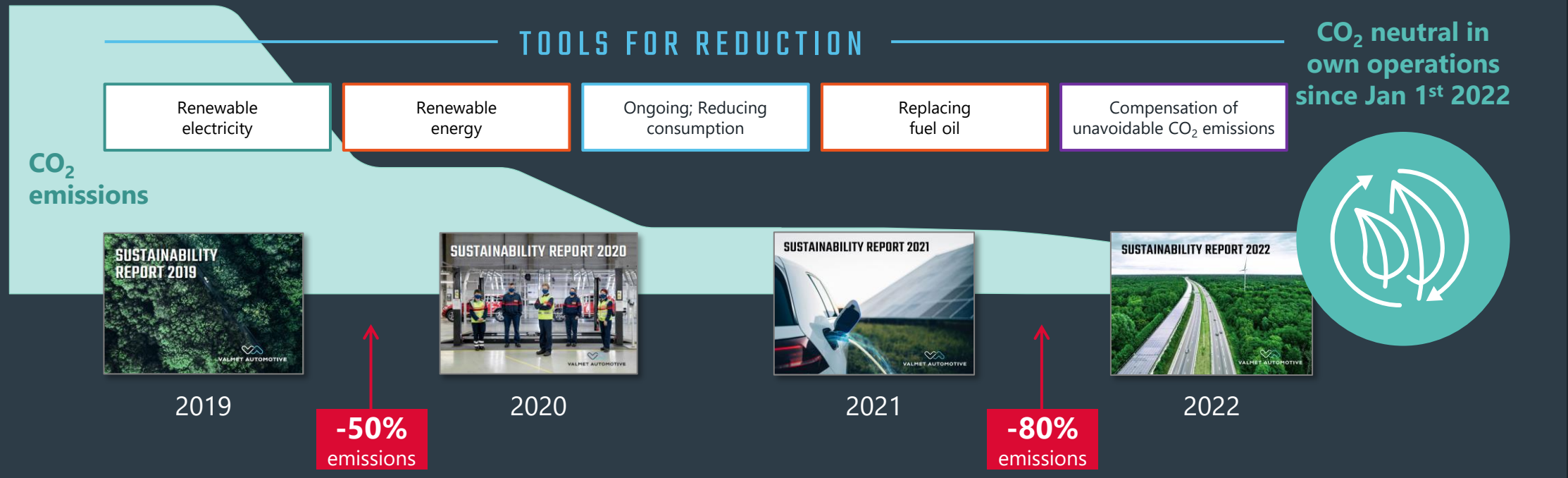
EV Systems has developed into a full-scale battery system supplier for automotive, truck & bus and off-highway





# SUSTAINABILITY & CO<sub>2</sub> NEUTRALITY IN OUR OPERATIONS

## Sustainability & CO<sub>2</sub> neutrality at Valmet Automotive



VA is committed to a 'true green' approach in production and supply chain

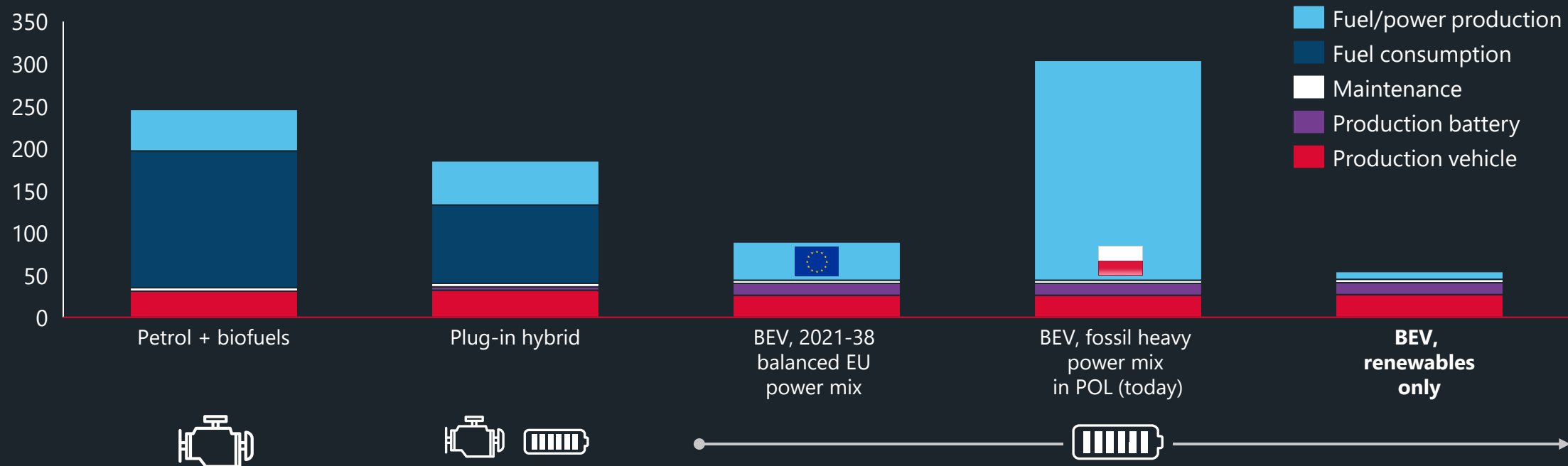
Note: Ca. 8,000 tons of CO<sub>2</sub> were compensated end of 2021, e.g., for fossil fuel oil in Uusikaupunki plant  
Source: Valmet Automotive



# IMPORTANCE OF RENEWABLE ENERGY FOR ELECTRIC VEHICLES

## Lifetime greenhouse emission footprint per car in g CO<sub>2</sub>/km (EU)

Average g CO<sub>2</sub> eq / km



'Connecting the dots' of renewable energy and electric mobility is key to the decarbonization of transportation

# THE FAST LANE TO FUTURE VEHICLES



VALMET AUTOMOTIVE